



GMT MONTHLY MEMBERSHIP PROGRESS REPORT

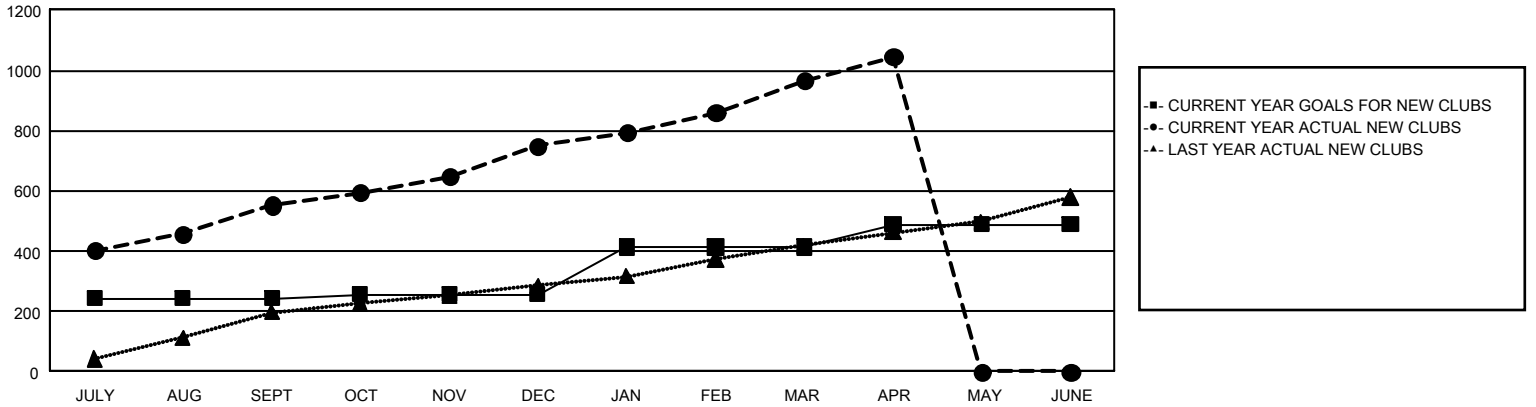
GAT Constitutional Area 6 - India

Results as of: 4/30/2026

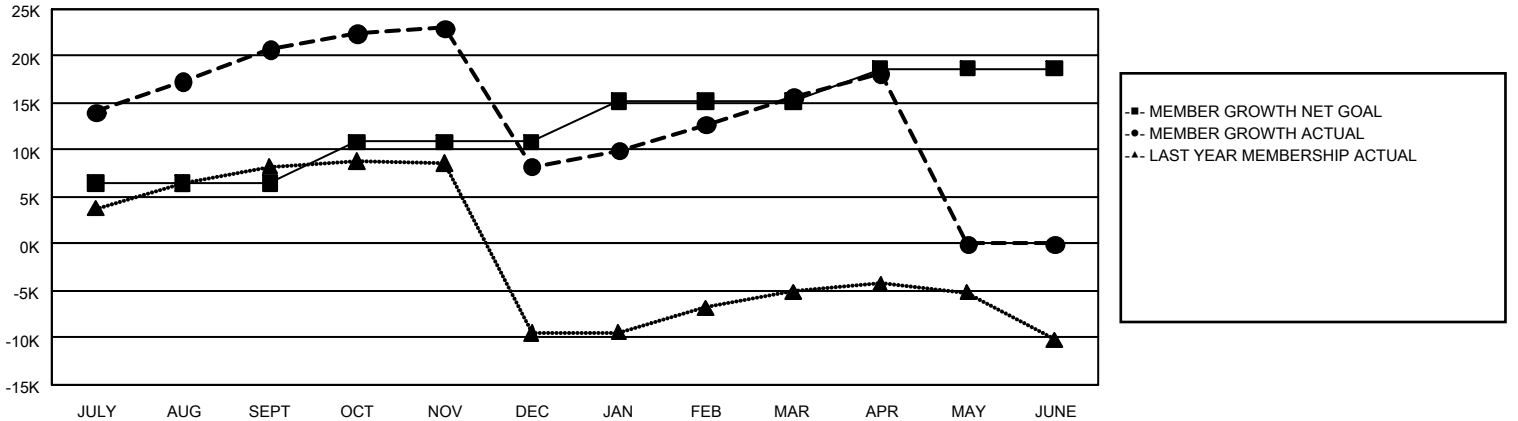
REPORT DOES NOT INCLUDE CLUBS IN UNDISTRICTED AREAS.

Clubs				Members			
RESULTS FOR 2025-2026				RESULTS FOR 2025-2026			
QUARTER	NEW CLUB GOAL	NEW CLUBS	DROPPED CLUBS	QUARTER	MEMBER GROWTH NET GOAL	MEMBER GROWTH ACTUAL	DROPPED MEMBERS ACTUAL (including transfers)
JULY/AUG/SEPT	244	553	106	JULY/AUG/SEPT	6,424	31,466	8,520
OCT/NOV/DEC	12	197	404	OCT/NOV/DEC	4,410	17,654	27,818
JAN/FEB/MAR	157	216	80	JAN/FEB/MAR	4,362	13,952	4,331
APR/MAY/JUNE	76	79	7	APR/MAY/JUNE	3,485	5,038	1,773

GOALS AND ACTUAL NEW CLUBS CUMULATIVE



GOALS AND ACTUAL MEMBERS CUMULATIVE



DROPPED CLUBS: 597	6,469 CLUBS OF 9,579 ADDED 1 OR MORE NEW MEMBERS	GENDER DISTRIBUTION MALE 221,236 (73.36%) FEMALE 80,233 (26.61%)
DROPPED MEMBERS DECEASED 674 CLUB CANCELLED 17,924 OTHER 23,743 <hr/> TOTAL 42,341	CLICK HERE FOR CUMULATIVE MEMBERSHIP DATA	TOTAL FAMILY UNIT MEMBERS 103,013 FAMILY MEMBERS PAYING HALF DUES 60,637